

# Dexion | High Speed Roller Door



## Product overview

---

The Dexion High Speed Roller Door is designed to improve goods flow, preserve moisture, prevent dust and minimise energy costs in environments such as logistics centers, food processing and distribution facilities, medical and vehicle storage areas.

They can be customised to match your building with a wide range of colors and materials, then complemented with your choice of optional features and accessories.

## Key features and benefits

---

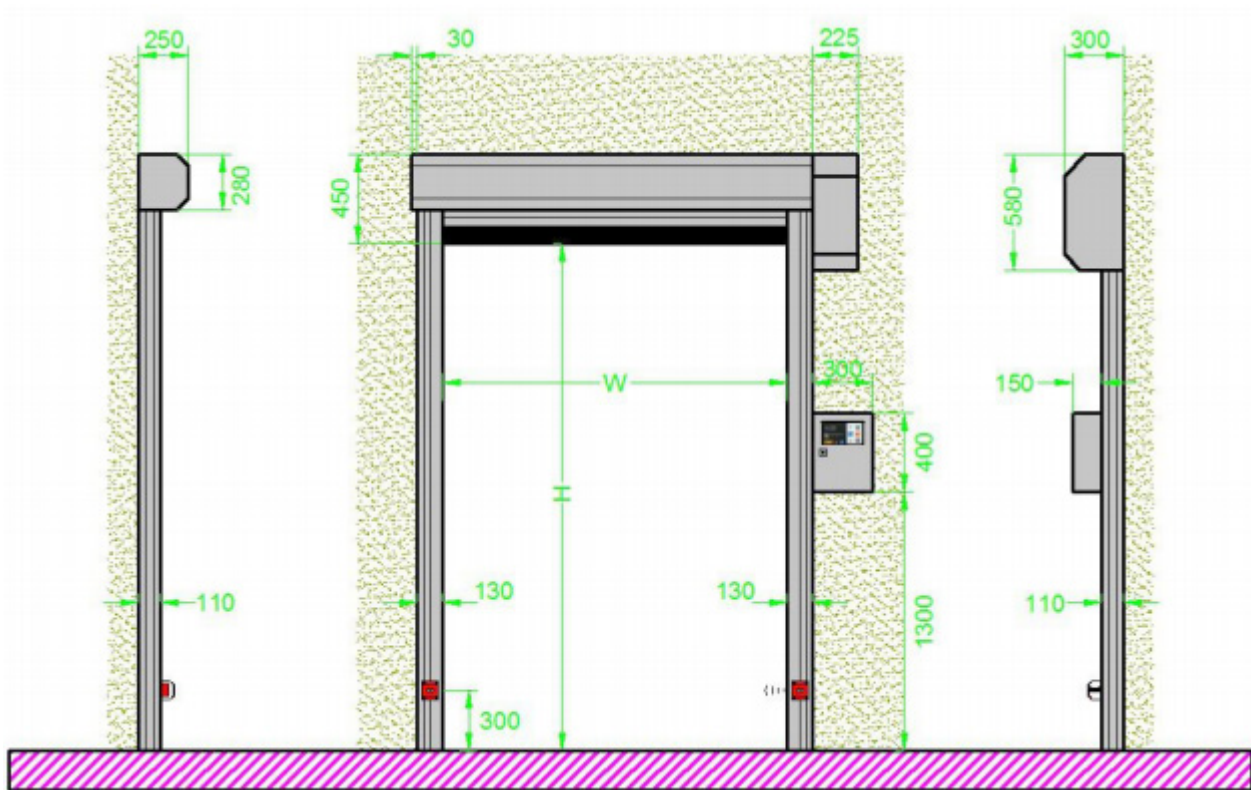
- Improve efficiency with fast, reliable door solution
- Increase convenience and safety with automation
- Reduce energy costs with improved climate control and weather protection
- Reduce cross-ventilation and increase hygiene for internal operations
- The motors that power all our high-speed door solutions are designed for outstanding energy efficiency. They ensure rapid, reliable door operation and optimal performance
- Can be operated both manually and automatically. In manual mode the door is operated from the control box. In automatic mode you can use pulse generators such as pull or key switches, buttons, RFID systems

# Dexion | High Speed Roller Door

## Technical specifications

Opening Speed	Up to 1.5m / sec	Voltage	Single Phase 220V, 380V
Closing Speed	0.6m / sec	Frequency	50Hz
Frame Structure	Galvanized Steel	Safety Device	Photoelectric Protection on Door Rail SRS system
Scroll Cover	Material: Stainless Steel 1.0mm thick Optional: Carbon Steel Spraying	Curtain Colours	Yellow, blue, orange, red, gray, green, sky blue, white Yellow transparent grid, white transparent grid, full transparent, black breathable grid
Track	Material: Aluminum Alloy (built-in brush increases sealing) Optional: Carbon Steel Spraying or Stainless Steel		
Power	0.75KW, 1.5KW		

## Space required for Installation



## Contact

For more information on the Dexion High Speed Roller Door, please contact us on 1800 100 050.

### Disclaimer:

The Information contained herein is the intellectual property of Dexion. The Information is defined to include: data, text, images, specification, graphics, design details and any and all other information whatsoever contained herein. The Information has been produced exclusively for Dexion and may not be used for any other purpose. None of the information may be used, altered, edited, copied, distributed or duplicated in any way without the express written consent of Dexion. Whilst the utmost care is taken to ensure the accuracy of the information contained herein, Dexion makes no guarantee as to its accuracy. Dexion shall, under no circumstances, be liable for any costs, losses, expenses or damages which may in any way be attributable to the use or adoption of such data and/or design details. All dimensions indicated are nominal only. Dexion reserves the right to alter or amend any of the information herein, including data and design details, without prior notice.